



Shanghai Lunsure Electronic
Technology Co.,LTD
Tel:0086-21-37185008
Fax:0086-21-57152769

BSOZAA50M

BIG SOZA CELL

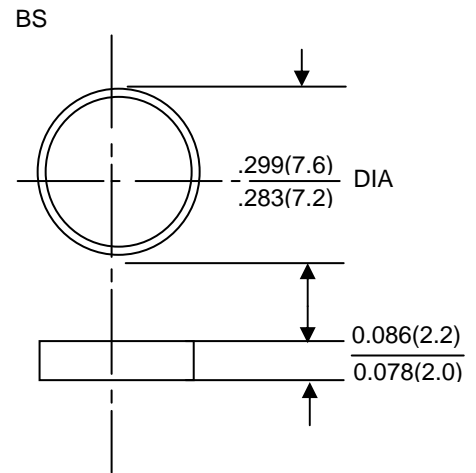
**AVALANCHE VOLTAGE
37 TO 41 VOLTS
CURRENT 50AMPS**

Features

- High power capability
- Economical
- Avalanche voltage: 37 to 41 volts

Mechanical Data

- Copper slug
- Technology: cell with vacuum soldered
- Polarity: colour dots denotes cathode end
- Mounting Position: Any
- Weight: 0.7 grams



Dimensions in inches and millimeters

Maximum Ratings and Electrical Characteristics

- Rating at 25°C ambient temperature unless otherwise specified
- Single phase, half wave, 60Hz, resistive or inductive load
- For capacitive load derate current by 20%

Parameters	Symbols	Min.	Nominal	Max.	Units
Peak repetitive reverse voltage	V_{RRM}		28		Volts
Working peak reverse voltage	V_{RWM}		28		
DC blocking voltage	V_{DC}		28		
Average rectified forward current at $T_c=125^\circ C$	I_o		50		Amps
Repetitive peak reverse surge current $T_c=10msec$ duty cycle <1%	I_{RSM}		50		Amps
Breakdown voltage (V_{BR} @ $I_R=100mA, T_c=25^\circ C$) $I_R=90Amps, T_c=150^\circ C, PW=80\mu sec$	V_{BR1}	37	39	41	Volts
	V_{BR2}			54	
Forward voltage drop (V_{FWB}) @ $I_F=100Amps < 300sec$	V_F	0.97	1.0	1.02	Volts
Peak forward surge current	I_{FSM}		600		Amps
Reverse leakage ($V_R=28V_{DC}$) $T_c=25^\circ C$	I_R	0.2	1.0	2.0	μA
Operating and storage junction temperature range	T_J, T_{STG}		-65 to +175		$^\circ C$

Notes: 1.Enough heatsink must be considered in application.

BSOZAA50M

