



Shanghai Lunsure Electronic  
Technology Co.,LTD  
Tel:0086-21-37185008  
Fax:0086-21-57152769

BSOZAA50L

**BIG SOZA CELL**

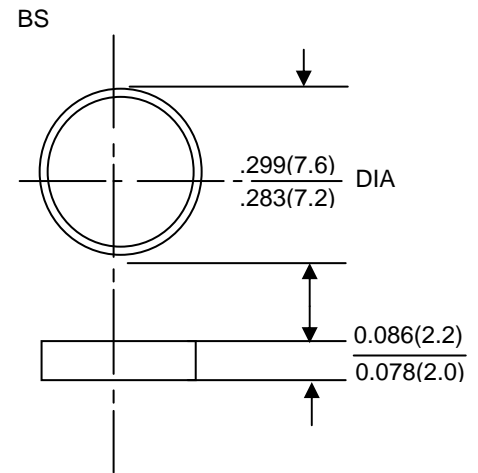
**AVALANCHE VOLTAGE  
20 TO 24 VOLTS  
CURRENT 50AMPS**

### Features

- High power capability
- Economical
- Avalanche voltage: 20 to 24 volts

### Mechanical Data

- Copper slug
- Technology: cell with vacuum soldered
- Polarity: colour dots denotes cathode end
- Mounting Position: Any
- Weight: 0.7 grams



Dimensions in inches and millimeters

### Maximum Ratings and Electrical Characteristics

- Rating at 25°C ambient temperature unless otherwise specified
- Single phase, half wave, 60Hz, resistive or inductive load
- For capacitive load derate current by 20%

Parameters	Symbols	Min.	Nominal	Max.	Units
Peak repetitive reverse voltage	$V_{RRM}$		17		Volts
Working peak reverse voltage	$V_{RWM}$		17		
DC blocking voltage	$V_{DC}$		17		
Average rectified forward current at $T_c=125^\circ C$	$I_o$		50		Amps
Repetitive peak reverse surge current $T_c=10msec$ duty cycle <1%	$I_{RSM}$		50		Amps
Breakdown voltage ( $V_{BR}$ @ $I_R=100mA, T_c=25^\circ C$ ) $I_R=90Amps, T_c=150^\circ C, PW=80\mu sec$	$V_{BR1}$	20	22	24	Volts
	$V_{BR2}$			32	
Forward voltage drop ( $V_{FWB}$ ) @ $I_F=100Amps < 300sec$	$V_F$	0.97	1.0	1.02	Volts
Peak forward surge current	$I_{FSM}$		600		Amps
Reverse leakage ( $V_R=17V_{DC}$ ) $T_c=25^\circ C$	$I_R$	0.2	1.0	2.0	$\mu A$
Operating and storage junction temperature range	$T_J, T_{STG}$		-65 to +175		$^\circ C$

Notes: 1. Enough heatsink must be considered in application.

# BSOZAA50L

